

UNIVERSITY OF LEEDS, *United Kingdom* & SBV, *Puducherry, India**First Announcement*

III International Health & Research Convention

February 03 - 06, 2025

SBV Campus, Puducherry, India

Session II: Cardiac Care Assistant Workshop

February 03 - 04, 2025

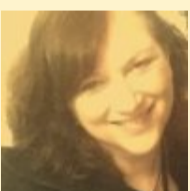
Medical Simulation Center, MGMCRI College Block

Workshop Objectives

This is a two days hands-on workshop conducted by eminent international faculty from the University of Leeds to empower the nursing/paramedical personnel in the knowledge, skill and attitude to perform and assist the process of cardiac assessment and monitoring. Upon successful course completion the participant would receive certification as a cardiac care assistant.

Workshop Conducted by Experts from University of Leeds

Session Coordinator

**Assoc Prof Rhona Riley**

Associate Professor Cardiac Physiology
Deputy Institute Director: Student Education
Leeds Institute of Cardiovascular and Metabolic Medicine
School of Medicine
University of Leeds

**Assoc Prof Natasha Watchorn**

Associate Professor Cardiac Physiology
Leeds Institute of Cardiovascular and Metabolic Medicine
School of Medicine
University of Leeds

**Prof. Sobana Jaiganesh**

Professor of Physiology
Deputy Director, Medical Simulation Center
MGMCRI
Sri Balaji Vidyapeeth

Learning Outcomes

On successful completion of the workshop the participant would be able to:

- Perform bedside ECG monitoring
- Perform non-invasive BP measurement and ambulatory BP application
- Assist in exercise tolerance testing
- Preparation for pacemaker follow-up
- Echocardiography
- Demonstrate effective safe working practice in the clinical/ community settings

Target Audience

Nursing and Allied Health Sciences personnel with a passion to learn and upskill.

Registration Fees

Academia: Rs 3,000/-

For Registration & Details

<https://ihrc.sbv.ac.in/>



Registrations are first come, first serve and limited to 25 delegates only

Quick Contact

Session Coordinator

Email: sobanar@mgmcri.ac.in

Whatsapp / Phone: +91 9486832270